



Elevate Guest Satisfaction with

# **The Cerve Collection**

*from Expressly HUBERT<sup>®</sup>*

# One Line of Product. Hundreds of Looks.



The Cerve Collection offers an assortment of coordinating pieces featuring products in varying heights, styles, colors and textures. The collection's adaptable design offers endless display configurations that can be used to anchor any food display theme—whether it's a breakfast, brunch or dinner buffet, catering event or a welcoming water station.

## Endless Combinations

Risers and displays are available in **Powder-Coated Matte Black**.

Melamine Vessels are available in: **Acacia, Black, Butcher Block, Marble or White**.



**HUBERT®**

 **EXPRESSLY HUBERT®**

[www.hubert.com/cerve](http://www.hubert.com/cerve)

**1-877-276-7773**



# Elevate Guest Satisfaction with The Cerve Collection



## Full Size Housing

Holds full size pan (sold separately, available in 5 finishes)

**Tall - 8 7/8"H**  
Stock No. 13036 (black) ● **20 3/8"L x 12 7/32"W**  
Full Size Pans: 76700

**Short - 2"H**  
Stock No. 52801 (black) ● **20 3/8"L x 12 7/32"W**  
Full Size Pans: 76700



## Half Size Housing

Holds half size pan (sold separately, available in 5 finishes)

**Tall - 8 7/8"H**  
Stock No. 26078 (black) ● **12 3/8"L x 9 15/16"W**  
Half Size Pans: 32033

**Short - 2"H**  
Stock No. 22731 (black) ● **12 3/8"L x 9 15/16"W**  
Half Size Pans: 32033



## Third Size Housing

Holds sixth size pan (sold separately, available in 5 finishes)

**Tall - 8 3/4"H**  
Stock No. 97338 (black) ● **12 1/8"L x 6 3/8"W**  
Third Size Pans: 70699

**Short - 2"H**  
Stock No. 67872 (black) ● **12 1/8"L x 6 3/8"W**  
Third Size Pans: 70699



## Sixth Size Housing

Holds sixth size pan (sold separately)

**Tall - 8 7/8"H**  
Stock No. 39025 (black) ● **6 1/2"L x 6"W**  
Sixth Size Pans: 10760

**Short - 2"H**  
Stock No. 62351 (black) ● **6 1/2"L x 6"W**  
Sixth Size Pans: 10760



## Large Riser

Tops available in 5 finishes

**Tall - 7"H**  
Stock No. 73746 (black with acacia top) ●●  
65140 (black with black top) ●●  
75183 (black with butcher block top) ●●  
66631 (black with marble top) ●○  
63063 (black with white top) ●○

**Short - 3 1/5"H**  
Stock No. 23624 (black with acacia top) ●●  
70900 (black with black top) ●●  
27517 (black with butcher block top) ●●  
90907 (black with marble top) ●○  
67505 (black with white top) ●○



## Small Riser

Tops available in 5 finishes

**Tall - 7"H**  
Stock No. 41571 (black with acacia top) ●●  
77012 (black with black top) ●●  
47944 (black with butcher block top) ●●  
78698 (black with marble top) ●○  
58237 (black with white top) ●○

**Short - 3 1/5"H**  
Stock No. 93182 (black with acacia top) ●●  
80375 (black with black top) ●●  
13196 (black with butcher block top) ●●  
81735 (black with marble top) ●○  
74812 (black with white top) ●○

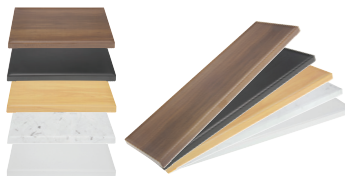


## Circular Riser

Tops available in 5 finishes

**Tall - 7 1/8"H**  
Stock No. 61859 (black with acacia top) ●●  
60433 (black with black top) ●●  
68485 (black with butcher block top) ●●  
61261 (black with marble top) ●○  
55192 (black with white top) ●○

**Short - 3 1/5"H**  
Stock No. 20209 (black with acacia top) ●●  
15190 (black with black top) ●●  
20431 (black with butcher block top) ●●  
19672 (black with marble top) ●○  
13755 (black with white top) ●○



## Replacement Riser Tops

Rectangular Large and Small

**Large**  
Stock No. 35752 (acacia) ●  
33671 (black) ●  
40377 (butcher block) ●  
34778 (marble) ○  
21734 (white) ○

**Small**  
Stock No. 14779 (acacia) ●  
98771 (black) ●  
18765 (butcher block) ●  
14683 (marble) ○  
94697 (white) ○



## Replacement Riser Tops

Circular - one size

**Circular**  
Stock No. 61736 (acacia) ●  
53672 (black) ●  
73673 (butcher block) ●  
57543 (marble) ○  
41737 (white) ○

# Elevate Guest Satisfaction with The Cerve Collection



## 3-Tier Angled Display

Shelves available in 5 finishes

**Shelf** 20 7/8"L x 7 27/64"W x 20 21/32"H  
 Stock No. 53038 (black with acacia top) ●●●●●  
 10996 (black with black top) ●●●●●  
 68278 (black with butcher block top) ●●●●●  
 12602 (black with marble top) ●●●●●  
 99198 (black with white top) ●●●●●



## 3-Tier Straight Display

Shelves available in 5 finishes

**Shelf** 21"L x 6 2/5"W x 20 7/8"H  
 Stock No. 36101 (black with acacia top) ●●●●●  
 96114 (black with black top) ●●●●●  
 37339 (black with butcher block top) ●●●●●  
 16100 (black with marble top) ●●●●●  
 87869 (black with white top) ●●●●●



## Pastry Displays

Multiple configurations available - melamine trays sold separately

**Bin and Stand** 23 3/10"L x 15"W x 8 2/5"H  
 Stock No. 54616 (black with single clear bin) ●●  
 68731 (black with divided clear bin) ●●  
 42443 (additional single clear bin only)  
 46036 (additional divided clear bin only)



## Bread Display

**Case** 13 5/32"L x 8 7/64"W x 21 1/4"H  
 Stock No. 94618 (black with clear drawers) ●



## 3-Tier Cylinder Holder

Cylinders sold separately, available in 2 colors

**Holder** 5 1/5"L x 14 4/5"W x 12 3/10"H  
 Stock No. 33740 (black) ● Cylinders: 63898



## 3-Tier Round Bowl Holder

Bowls sold separately, available in multiple finishes

**Large** 8"L x 22"W x 13"H  
 Stock No. 44279 (black) ● Bowls: 12256; 63684

**Medium** 6"L x 15 7/10"W x 13"H  
 Stock No. 37996 (black) ● Bowls: 55084; 88512

**Small** 6"L x 14 7/10"W x 8 2/5"H  
 Stock No. 32698 (black) ● Bowls: 52863



## 3-Tier Square Bowl Holder

Bowls sold separately, available in 2 colors

**Large** 8"L x 20 1/2"W x 14"H  
 Stock No. 12448 (black) ● Bowls: 19429

**Medium** 6"L x 16"W x 11"H  
 Stock No. 80511 (black) ● Bowls: 19043



## 3-Tier Melamine Cube Holder

Condiment holders sold separately, available in 4 colors

**Small** 3 7/8"L x 13 1/2"W x 9 11/16"H  
 Stock No. 99020 (black) ● Melamine Cube: 52933



## 3-Tier Cube Holder

Clear cubes sold separately

**Large** 6"L x 17 3/10"W x 9 7/10"H  
 Stock No. 43157 (black) ● Cubes: 88348 Lids: 60863

**Small** 5"L x 14 2/5"W x 9"H  
 Stock No. 60284 (black) ● Cubes: 80204 Lids: 57466

# Elevate Guest Satisfaction with The Cerve Collection



## 2-Tier Airpot Holder

*Airpots and drip trays sold separately*

**Holder** 7 4/5"L x 23 3/8"W x 16 5/16"H  
Stock No. 13759 (black) ●



## 2-Tier Carafe Holder

*Carafes sold separately*

**Holder** 7"L x 14 9/10"W x 10 1/2"H  
Stock No. 72818 (black) ●



## Chafer Stand

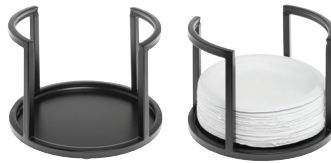
*Compatible with faux rolltop chafer or electric water pan (both sold separately)*

**Stand** 22 1/10"L x 14 9/10"W x 9 1/10"H  
Stock No. 77327 (black) ● Rolltop: 22586 Water Pan: 28248



## Plate and Napkin Holder

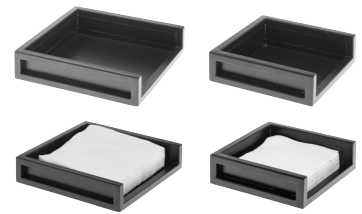
**Holder** 10 1/2"L x 15 1/2"W x 9 4/5"H  
Stock No. 84417 (black) ●



## Plate Holder

**Large** 8 1/2"Dia x 6 7/10"H  
Stock No. 82275 (black) ●

**Small** 6 1/2"Dia x 8 1/5"H  
Stock No. 95024 (black) ●



## Napkin Holder

**Large** 8 3/5"L x 8 3/5"W x 2 1/10"H  
Stock No. 60516 (black) ●

**Small** 6 3/5"L x 6 3/5"W x 2 1/10"H  
Stock No. 92444 (black) ●



## Cup/Lid Holder

**Holder** 4 7/8"L x 4 7/8"W x 8"H  
Stock No. 21407 (black) ●



## Oatmeal Packet Holder

*Includes 2 acrylic holders*

**Holder** 11 1/16"L x 9 1/8"W x 3 15/32"H  
Stock No. 35667 (black) ●



## Replacement Acrylic Holders

*Sold as set of 2*

**Each** 10"L x 3 9/10"W x 2 2/5"H  
Stock No. 20861 (clear)



Endless display configurations



Versatility between meals



Vertical and modular